

## Han-Eco 10B Outd-HBM-with SL-with cover

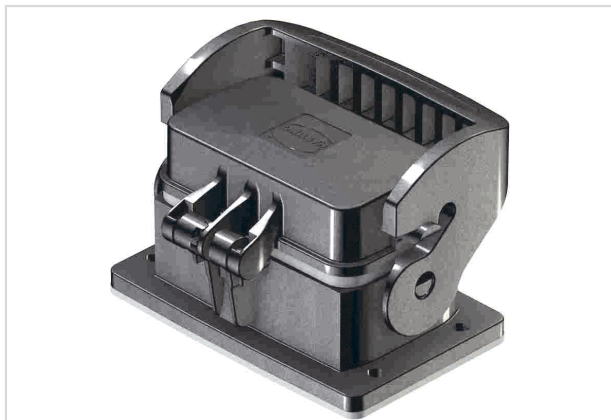


Image is for illustration purposes only. Please refer to product description.

|                    |   |
|--------------------|---|
| Part number        | 19 43 210 0341  |
| Specification      | Han-Eco 10B Outd-HBM-with SL-with cover   |
| HARTING eCatalogue | <a href="https://b2b.harting.com/19432100341">https://b2b.harting.com/19432100341</a> |

### Identification

|                             |                           |
|-----------------------------|---------------------------|
| Category                    | Hoods/Housings            |
| Series of hoods/housings    | Han-Eco® B                |
| Type of hood/housing        | Bulkhead mounted housing  |
| Description of hood/housing | With thermo-plastic cover |

### Version

|              |                      |
|--------------|----------------------|
| Size         | 10 B                 |
| Locking type | Single locking lever |

### Technical characteristics

|  |  |
|--|--|
| Limiting temperature                   | -40 ... +125 °C                                |
| Note on the limiting temperature       | For use as a connector according to IEC 61984. |
| Number of relockings                   | ≥500   |
| Degree of protection acc. to IEC 60529 | IP66   |

### Material properties

|                         |  |
|-------------------------|--|
| Material (hood/housing) | Polyamide (PA)<br>Fibre-glass reinforced |
| Colour (hood/housing)   | RAL 9005 (jet black)                     |
| Material (seal)         | FPM                                      |
| Colour (seal)           | RAL 7001 (silver-grey)                   |
| Material (locking)      | Polyamide (PA)<br>Fibre-glass reinforced |
| Colour (locking)        | RAL 9005 (jet black)                     |



Pushing Performance  
Since 1945

## Material properties

|  |                              |
|--|------------------------------|
| Material flammability class acc. to UL 94                  | V-0                          |
| Material flammability class acc. to UL 94 (locking levers) | V-0                          |
| RoHS   | compliant                    |
| ELV status   | compliant                    |
| China RoHS   | e                            |
| REACH Annex XVII substances                                | Not contained                |
| REACH ANNEX XIV substances                                 | Not contained                |
| REACH SVHC substances                                      | Not contained                |
| California Proposition 65 substances                       | Yes                          |
| Fire protection on railway vehicles                        | EN 45545-2 (2020-08)         |
| Requirement set with Hazard Levels                         | R22 (HL 1-3)<br>R23 (HL 1-3) |

## Specifications and approvals

|                |   |
|----------------|---|
| Specifications | IEC 61984<br>EN 45545-2 Fire protection on railway vehicles |
| CE             | Yes   |

## Commercial data

|                                |  |
|--------------------------------|--|
| Packaging size                 | 1  |
| Net weight                     | 144 g                                    |
| Country of origin              | Germany                                  |
| European customs tariff number | 85389099                                 |
| GTIN                           | 5713140178243                            |
| eCl@ss                         | 27440202 Shell for industrial connectors |